



Access Statement for Persnore Plum Festival

This access statement does not contain personal opinions as to our suitability for those with disabilities, but aims to accurately describe the facilities and services that we offer to our visitors.

Introduction

The Pershore Plum Festival is a multiple award winning event to celebrate local distinctiveness and aid the market town of Pershore. At the Pershore Flower Show in 1920 an advertising poster described it as “The Largest Plum Show on Earth”. Over 90 years later, Pershore and its Plum Festival are striving to recreate this spectacle.

In 1996 a one day fayre was resurrected to celebrate the towns’ horticultural plum heritage. In 2008 this fayre became a month long festival and has consistently grown each year subsequently. Over the Bank Holiday weekend the event completely takes over the town as it divides into “Plum Zones” providing plum and purple events and activities for all the family, including entertainment, cookery

demonstrations, classic cars, children’s activities, arts, crafts, an award winning farmers markets and almost every shop open.

Organised by a committee of local volunteers, all stakeholders are extremely passionate about the largest event in Pershore’s calendar. Quality is of utmost importance, so all activities and events are provided following the hard work to deliver the highest level of access. Being located in numerous venues around the town, in some instances, access is not always possible although every effort to accommodate visitors will have been taken.

As the event is predominately based within the town centre - paths, kerbs, accesses, surfaces, and crossings will all be in accordance with typical standards.



Pre-Arrival

- For full details and maps of how to find Pershore, please see our website www.pershoreplumfestival.org.uk
- Alternatively, you can plan your journey by car or public transportⁱ using www.transportdirect.info; simply entering your postcode and ours, which using WR10 1PT will get you to the park and stride car park – one of numerous within the town.
- Pershore train station (PSH), is approximately 1.4 miles to the town centre (25 minute walk). The station has level access from the highway to the single platform meaning wheelchair users will have no problem accessing the station. Taxis can be called where required.
- There is a bus stop in the centre of town in Broad Streetⁱⁱ, with services from neighbouring towns and cities including Worcester, Stratford-upon-Avon, Cheltenham and Tewkesbury.
- All paths within the town centre are flat so therefore will not impede wheelchair mobility.

Car Parking and Arrival

Pershore has multiple car parks with a number of assigned disabled spaces. Information on car parking in Pershore can be found below. In addition to these, free parking (maximum time periods imposed) can be located in Broad Street (with assigned disabled spaces) and Church Walk.

Long Stay Tariffs (hours):

Up to 1 hr -£1.00

Up to 2 hrs - £2.00

Up to 3 hrs - £3.00

Up to 10hrs - £4.00

Free parking on Sundays

Short Stay Tariffs (hours):

Up to 30 minutes - 50p

Up to 1 hr - £1.00

Up to 2 hrs - £2.00

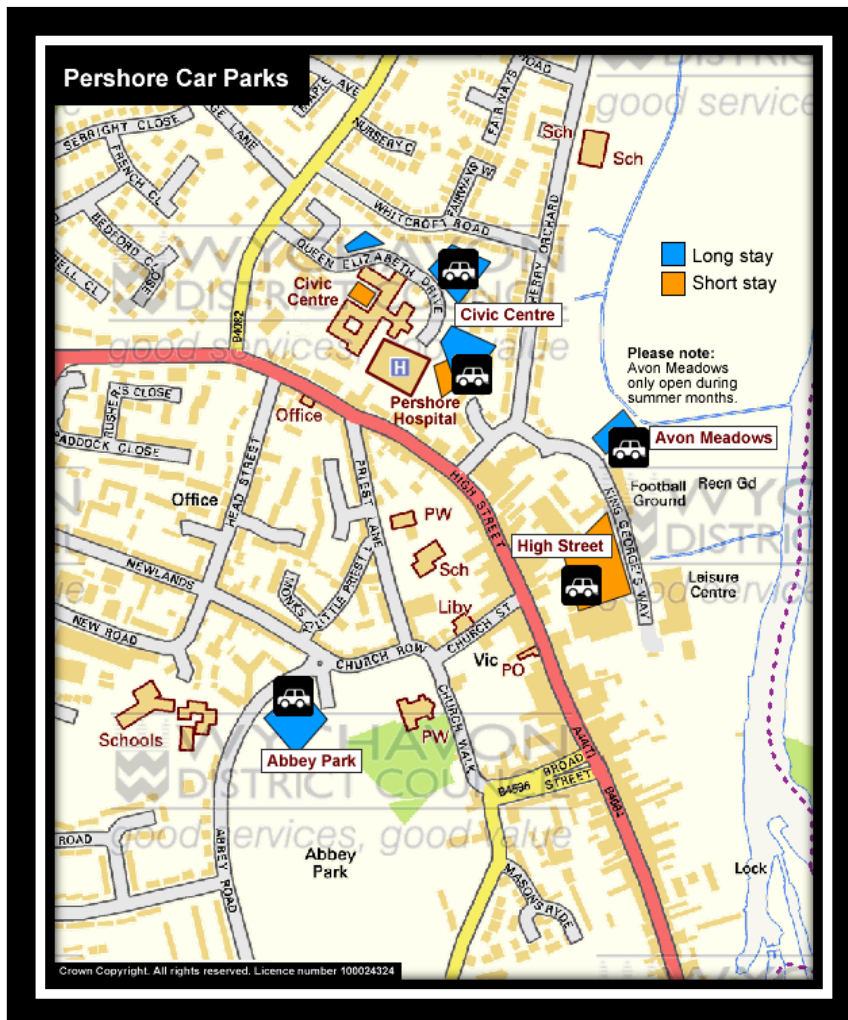
Up to 3 hrs - £3.00

Free parking on Sundays

Car Park	Long Stay Bays	Short Stay Bays	Disabled Spaces	Motor Cycle Bays	Operational Times
Abbey Park - WR10 1JP	94	0	6	0	08.00-18.00, Mon-Sat
Avon Meadow (weather permitting) - WR10 1EL	40	0	0	0	08.00-18.00, Mon-Sat
Civic Centre - WR10 1PT	242	37	11	1	08.00-18.00, Mon-Sat
High Street - WR10 1EU	0	227	9	2	08.00-18.00, Mon-Sat

All car parks in Pershore are located on flat hard standing ground except for Avon Meadow which incorporates 'grass-crete' which may cause difficulty for wheelchair users.

The town centre is easily negotiable from all car parks encompassing flat paths, pedestrian crossings and zebra crossings.



Park and Ride

On the fayre day (Bank Holiday Monday), the Festival provides a Park and Ride service to cater for the large volumes of vehicles accessing the town. There are two sites available to the North and South of the town. A local coach company operates this service and do provide a coach with wheelchair seating inside along with a wheelchair lift.



Locations

Abbey Park



Entrance from Church Walk

A large number of activities take place on Abbey Park - a Green Flag award winning park in the heart of the town. An attraction in its own right, the park caters for all by excelling in the following areas which lead to the Green Flag Status: A welcoming place; Conservation and Heritage; Healthy, safe and secure; Community involvement; Clean and well maintained; Marketing; Sustainability; Management. The breadth of the grounds can be covered using pavements. Entrances to the park are wide enough for wheelchairs and/or have dropped kerbs enabling easy access.

The main pedestrian and vehicular access to Abbey Park is off the junction of Newlands, Abbey Road and Church Row known as the Octagon.

Only two of the additional eight pedestrian entrances to the park are gated. These are in the closed churchyard and are never locked. Two other entrances on to the busier roads on the eastern edge of the park (Church Walk and Defford Road) have a staggered walled entrance to prevent cyclists and children coming directly off the park into traffic.

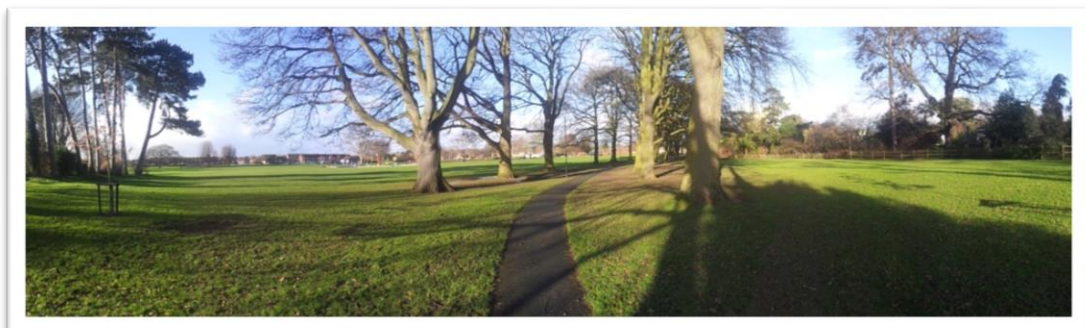
Abbey Park has approximately 1457m of pathways all of which are tarmac surfaced and which are for the main part in good condition.

Due to the flat terrain, hard surfacing and generally good condition of the paths all areas of the park are accessible to visitors with a wide range of ability levels. There are only two sets of steps within the park, one at the rear of the toilet block onto Church Walk and another at the western entrance to the Abbey. The toilets can be accessed by wheelchair users by exiting the park at the Broad Street entrance and going approximately 20metres along Church Walk.



Example of surface in Abbey Park

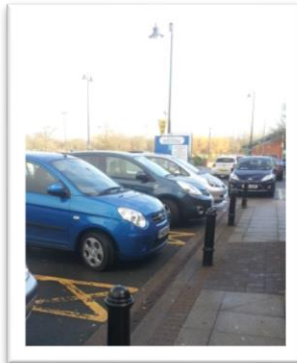
The toilet block is wheelchair and child friendly and use of the toilets are timed to discourage anti-social behaviour. Access to the play facilities in the park such as the skate park, wet play area and children's play facilities are all from the main pathways. The areas are gated with hinges that minimise the potential for injury to users. The conditions of these gates are checked informally on a daily basis and more regularly as part of the play area checks every week.



Chapman Court (Plum Alley)

Throughout the festival, multiple events take place within Chapman Court, adopted as Plum Alley for the duration of August.

Located directly off the High Street, access is via flat hard standing surfaces. A car park featuring disabled spaces can be found to the rear adjacent to the public toilet block.



King Georges Field

Set adjacent to the River Avon, King Georges Field is a peaceful open space which already caters for the access for disabled anglers.

A large car park is very close by to ease transportation, with hard standing ground directly down to the rivers edge.

River Cruises

To enjoy one of Pershore's prized assets, visitors have the luxury of exploring the River Avon courtesy of Avon Leisure Cruises. The pride of their fleet is The Spirit of Freedom and this passenger vessel is equipped with superb disabled access and facilities. Being able to cater for up to 40 people, this boat is well served to provide a comfortable experience for all.



St Andrews Garden



The bulk of the trade stands at the Plum Festival can be found in St Andrews Garden. Primarily on grass, access onto the gardens is well served via the High Street walkway and ramped access from Church Walk. A gravel topped hard surface forms the pathway around the perimeter of the area.

The St Andrews Centre adjoining the gardens provides a useful facility for disabled visitors after overseeing a recent refurbishment upgrading their access facilities.

Additional locations

The Pershore Plum Festival encompasses multiple venues throughout the town to utilise community cohesion. More information can be found on the access to the venues below using the adjoining information.

The Angel Hotel - www.angelpershore.co.uk; Tel: 01386 552046;
Fax: 01386 552581;
Email: info@angelpershore.co.uk

Dudley's Coaches - www.dudleys-coaches.co.uk; Tel: 01386 792206;
Email: info@dudleys-coaches.co.uk

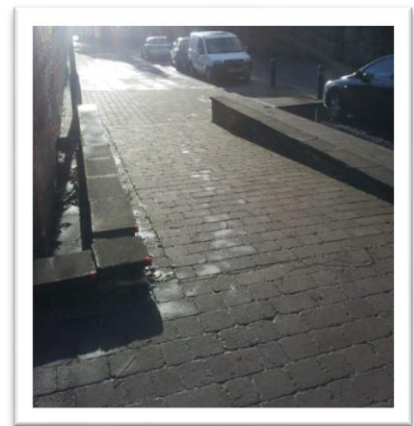
Pershore Abbey - www.pershoreabbey.org.uk; Tel: 01386 552071;
Email: vicar@pershoreabbey.org.uk

Pershore Baptist Church - www.pershorebaptist.org.uk; Tel: 01386 556088;
Email: minister@pershorebaptist.org.uk

Number 8 Community Arts Centre - www.number8.org; Tel: 01386 555028;
Email: enquiries@number8.org

St Andrews Parish Centre - www.pershorestandrews.org.uk/welcome; Tel: 01386 552071;
Email: standrews@pershoreabbey.org.uk

Worcester Racecourse - www.worcester-racecourse.co.uk; Tel: 01905 25364;
Email: info@worcester-racecourse.co.uk



Ramp up to St Andrews Garden



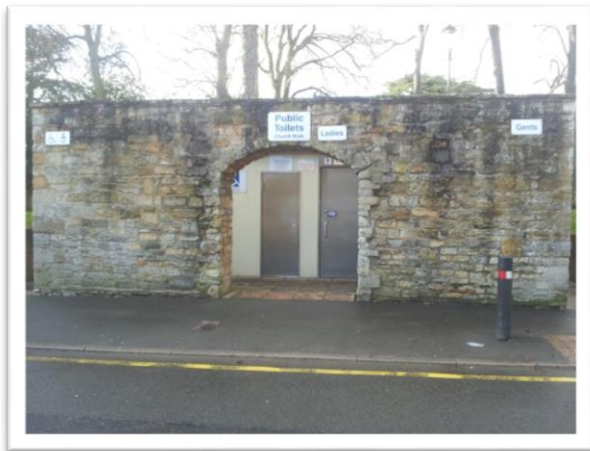
Ramp up to St Andrews Parish Centre

Toilets

The Pershore Plum Festival provides multiple toilets for visitors on the fayre day in addition to the public toilets located within the town.

Additional toilets (including disabled) are located on Abbey Park.

The public toilets can be found in Church Walk and off the High Street (behind Chapman Court).



Disabled Public Toilets

To access a public disabled toilet in Pershore you will require a RADAR Key.

RADAR stands for the Royal Association for Disability and Rehabilitation. It runs a National Key Scheme to enable the disabled to access public toilets. Keys are available from our shops at Droitwich Community Contact Centre, Evesham Community Contact Centre and at the Pershore Community Contact Centre. They are also available from RADAR at the following address: 12 City Forum, 250 City Road, London EC1V 8AF, telephone number 0207 250 3222, or visit their website on www.radar.org.uk

Disabled facilities are available in each of our toilet blocks which are **open daily from 8am to 6pm:-**

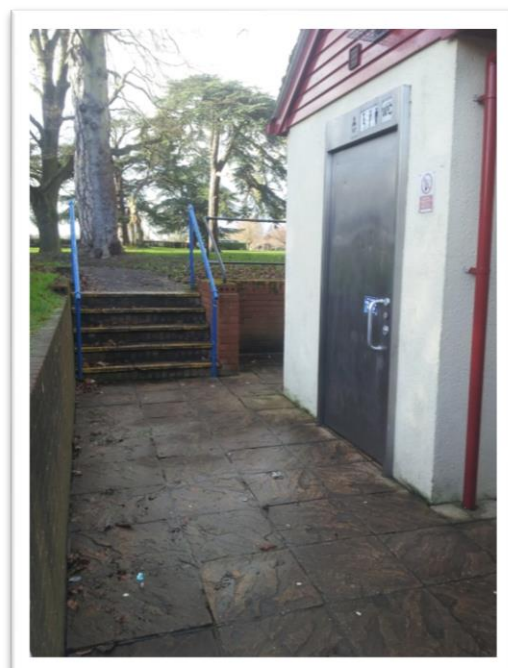


Pershore

- Church Walk
- High Street

For more information please contact:

Client Services
Wychavon District Council
Telephone: 01386 565018 between 9am-5pm,
Monday to Friday
Email: client.services@wychavon.gov.uk



Additional Information

Assistance dogs are welcome and water can often be found outside charity shops upon the High Street

Our festival programme can be made available in large print upon request subject to availability.

First Aid point is located in the Town Hall, in the town centre.

Hire of wheelchairs

Multiple wheelchairs are available for use on the day and can be found at the First Aid point. Enquiries prior to the day will be adhered to by the best of the ability allowed. Pre-booking for Bank Holiday Monday available via 01386 565373

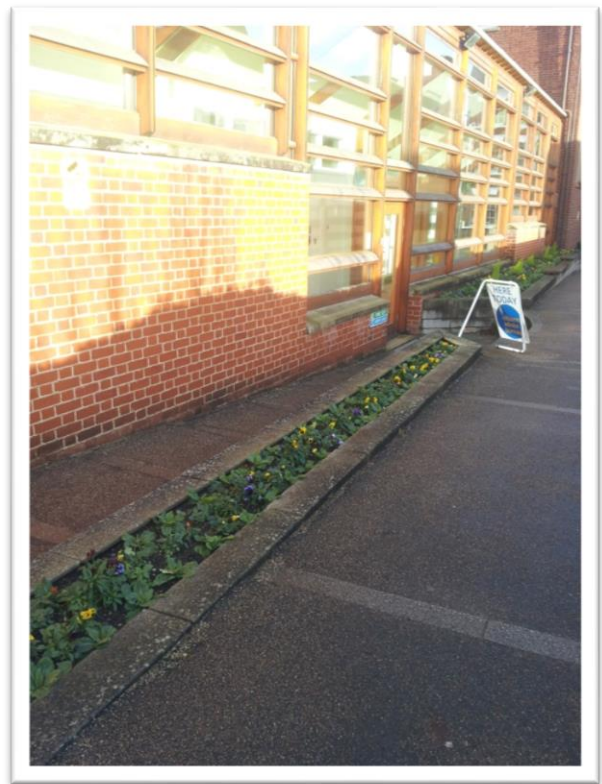
Provided by Event Mobility – a Charitable Trust making visitors mobile at events nationwide.

www.eventmobility.org.uk

Tel: (prior to event) 01386 725391

Tel: (at event) 07702 833102 / 07977 474167

Email: info@eventmobility.org.uk



Access to the Town Hall (side entrance)

Contact Information

Chairman: Angela Tidmarsh

Telephone: 01386 565373 or 07967 640819

Address: Pershore Plum Festival, PO BOX 2, Cowley's Way, Pershore, Worc, WR10 1EY

Email: info@pershoreplumfestival.org.uk

Website: www.pershoreplumfestival.org.uk

ⁱ Pub transport does not run to Pershore on the Bank Holiday Monday

ⁱⁱ Broad Street will be officially closed for Bank Holiday Monday, thus preventing the use of the Bus Stop and disabled spaces